



HUNT

|| Woodford Green | IG8

Per Month £8,000 Per Month





Nestled on a charming peaceful tree lined street in Woodford Green, this stunning Victorian terraced house has a fabulous presence.

Offering a perfect blend of classic elegance and modern luxury. Spanning an impressive 2,661 square feet, this immaculately presented property boasts five spacious bedrooms, making it an ideal family home.

Upon entering, you are greeted by two inviting reception rooms that provide ample space for relaxation and entertaining. The high-end renovation throughout the house ensures that every corner reflects quality and style, while the quirky design elements add a unique character that sets this home apart.

Oversized kitchen diner for entertaining with bifold doors opening out to the perfectly appointed garden. With three bathrooms, morning routines will be a breeze for the entire family. The added benefit of a basement, complete with a sauna, party area and wine collection area, perfect for a wind down after a busy day.

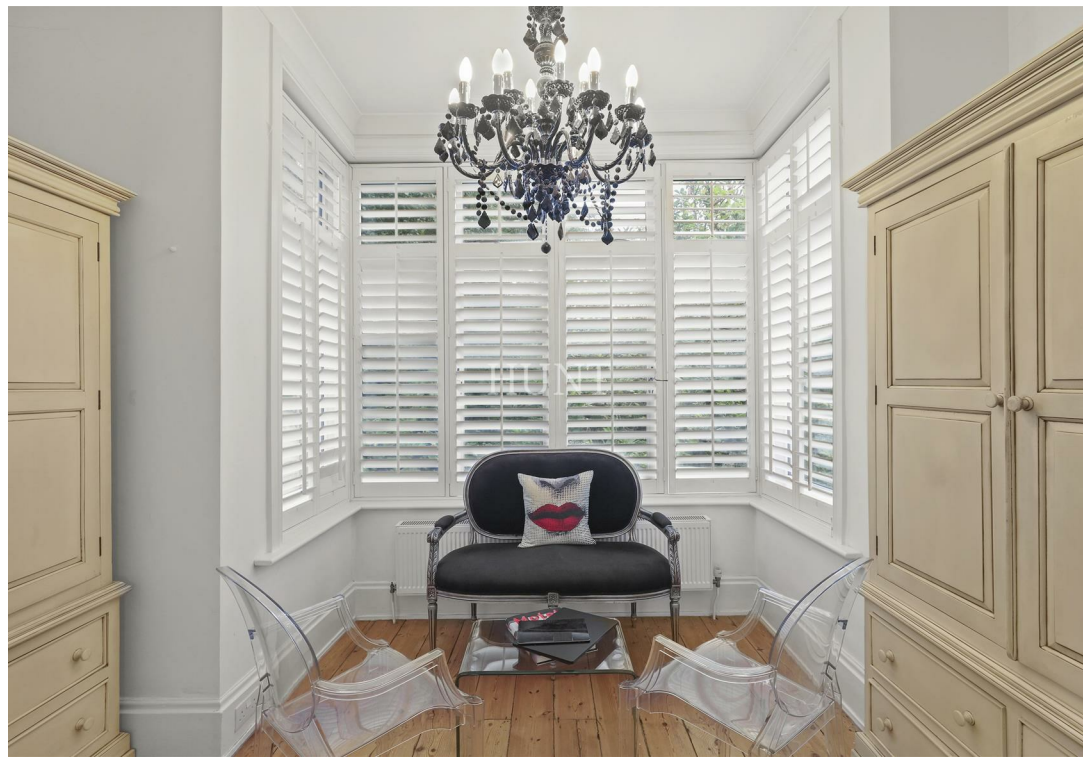
For those with vehicles, the property includes parking for one car in a secure garage with entrance at the back of the large level lawn garden a valuable feature in this desirable area. Woodford Green is known for its vibrant community and convenient access to local amenities and all major motorways and A roads making it an excellent choice for families and professionals alike. Just a few minutes walk to Woodford central line underground station direct route onto the city and west end of London.

This property is not just a house; it is a home that promises comfort, style, and a touch of luxury. If you are seeking a residence that combines Victorian charm with modern living, this is an opportunity not to be missed.



HUNT





- Stunning five bed Victorian home
- Three contemporary bathrooms
 - Two reception rooms
 - Immaculately presented
 - Great Location
- Basement complete with sauna
 - Sole agent





SAUNA CONTROL PANEL
HEAT SENSORS
1 2
3 4
5 6
7 8
9 10
11 12
13 14
15 16
17 18
19 20
21 22
23 24
25 26
27 28
29 30
31 32
33 34
35 36
37 38
39 40
41 42
43 44
45 46
47 48
49 50
51 52
53 54
55 56
57 58
59 60
61 62
63 64
65 66
67 68
69 70
71 72
73 74
75 76
77 78
79 80
81 82
83 84
85 86
87 88
89 90
91 92
93 94
95 96
97 98
99 100

S M E G

HUNT

CHAMPAGNE
Veuve Clicquot
REIMS FRANCE

BOLLINGER

CHAMPAGNE
TAITTINGER
à Reims

CHAMPAGNE
Laurent-Perrier
MAISON FONDÉE
1812



HUNT


732 Chigwell Road, Woodford Green, Essex, IG8 8AL



020 85027667



info@huntpropertyservices.co.uk



www.huntpropertyservices.co.uk



PROPERTY MISDESCRIPTIONS ACT 1991: The Agents has not tested any apparatus, equipment, fixtures and fittings, or services, so cannot verify that they are in working order or fit for the purpose. The buyer is advised to obtain verification from his or her Professional Buyer. References to the Tenure of the property are based on information supplied by the Vendor. The agents have not had sight of the title documents. The buyer is advised to obtain verification from their Solicitor. You are advised to check the availability of any property before travelling any distance to view.